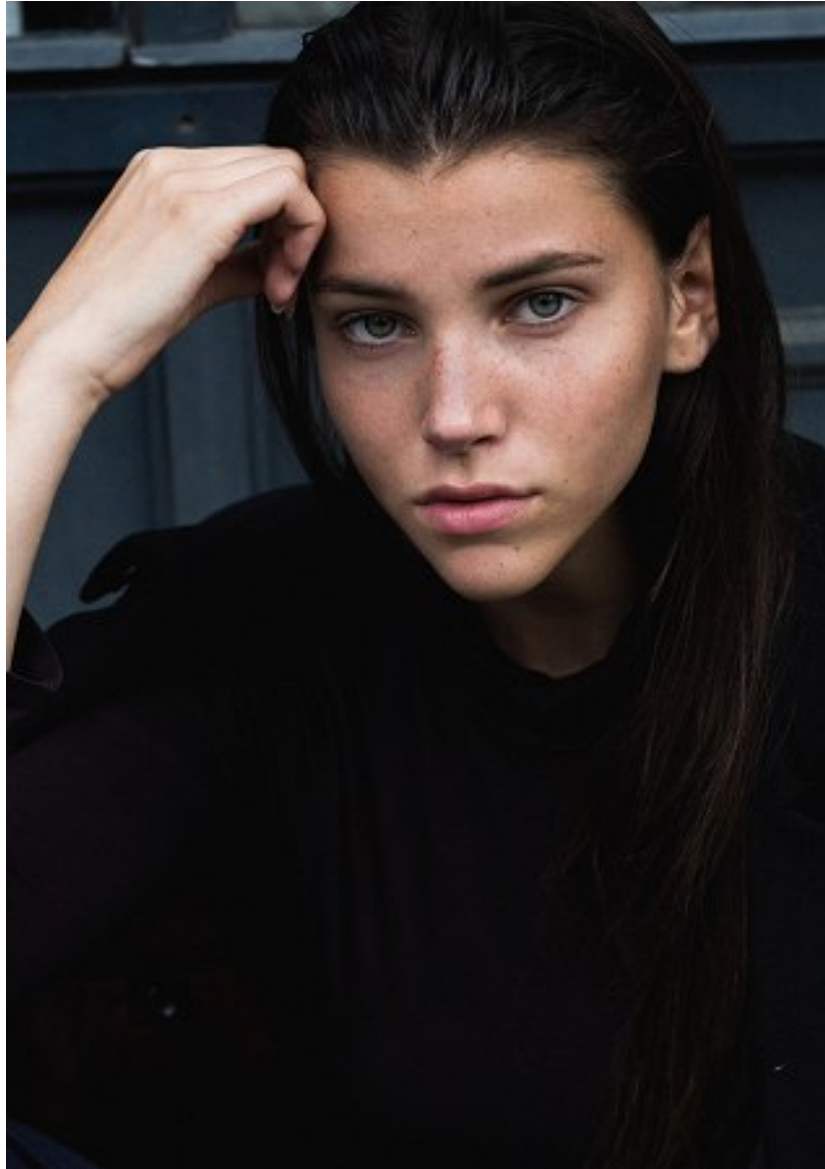


# KARIN

---

MODELS AGENCY



**NOLWENN FAIJEAN**

HEIGHT 176CM/5'9.5" | BUST 83CM/32.5"C | WAIST 60CM/23.5" | HIPS 91 CM/36" | SIZE 36 EU/6 US/8 UK | SHOES 40 EU/9 US/6.5 UK | HAIR BROWN | EYES GREEN

# KARIN

MODELS AGENCY



#### LE TEE SHIRT DE GROUPE

TSHIRT EN COTON, P&G,  
20€. BOISE EN PIERRE, ANCH,  
30€. MINI-CROULES EN  
ARGENT ET CRISTAL,  
RAHOORA, 50€. COLLIÈRE EN  
VERMEIL ET DIAMANTS, DE  
JAGGER. CROULES EN  
MÉTAL DORÉ (P&G).  
CHEVALÈRE EN VERMEIL  
ROSE ET DIAMANTS, DE  
JAGGER, 50€.  
CUISSARDS EN VEAU  
VELOURS ET PERLES,  
GALGHE, 700€. MONTRE  
"OYSTER PERPETUAL 36" EN  
ACIER, ROLEX.



#### L'ÉCHARPE SUPPORTER

BLOUSON EN DENIM, APC,  
210€. JEAN EN DENIM, APC,  
150€. ÉCHARPE EN LANE  
MÉRINOS, APC, 95€.  
BOUCLES DOUBLES EN  
MÉTAL, AGATHA, 120€.  
MINI-CROULES EN ARGENT  
ET CRISTAL, RAHOORA, 50€.  
MULES EN CUIR ET FAUSSE  
FOURRURE, HELVIN G  
HAMILTON, 180€. 90€.

## NOLWENN FAIJEAN

HEIGHT 176CM/5'9.5" | BUST 83CM/32.5"C | WAIST 60CM/23.5" | HIPS 91 CM/36" | SIZE 36 EU/6 US/8 UK | SHOES 40 EU/9 US/6.5 UK | HAIR BROWN | EYES GREEN

# KARIN

---

## MODELS AGENCY

---



**LE JOGGING  
DELUXE**  
KIMON EN VINYL, DELPHINE  
OCLAFON: ROSE CHASSE  
EN MODAL ET MOUSSELINE,  
DANIEL & JOEL 2000,  
FANTASION EN 10 JOURS,  
KIDCHÉ, SÉRIE  
CHAMBRASS EN CUIR DE  
SANDER HANN: MONTE EN  
ACIER, BOLEX.

**NOLWENN FAIJEAN**

HEIGHT 176CM/5'9.5" | BUST 83CM/32.5"C | WAIST 60CM/23.5" | HIPS 91 CM/36" | SIZE 36 EU/6 US/8 UK | SHOES 40 EU/9 US/6.5 UK | HAIR BROWN | EYES GREEN

# KARIN

---

MODELS AGENCY

---



## NOLWENN FAIJEAN

HEIGHT 176CM/5'9.5" | BUST 83CM/32.5"C | WAIST 60CM/23.5" | HIPS 91 CM/36" | SIZE 36 EU/6 US/8 UK | SHOES 40 EU/9 US/6.5 UK | HAIR BROWN | EYES GREEN

# KARIN

---

MODELS AGENCY



**NOLWENN FAIJEAN**

HEIGHT 176CM/5'9.5" | BUST 83CM/32.5"C | WAIST 60CM/23.5" | HIPS 91 CM/36" | SIZE 36 EU/6 US/8 UK | SHOES 40 EU/9 US/6.5 UK | HAIR BROWN | EYES GREEN

# KARIN

---

MODELS AGENCY

---



**NOLWENN FAIJEAN**

HEIGHT 176CM/5'9.5" | BUST 83CM/32.5"C | WAIST 60CM/23.5" | HIPS 91 CM/36" | SIZE 36 EU/6 US/8 UK | SHOES 40 EU/9 US/6.5 UK | HAIR BROWN | EYES GREEN

# KARIN

---

MODELS AGENCY



**NOLWENN FAIJEAN**

HEIGHT 176CM/5'9.5" | BUST 83CM/32.5"C | WAIST 60CM/23.5" | HIPS 91 CM/36" | SIZE 36 EU/6 US/8 UK | SHOES 40 EU/9 US/6.5 UK | HAIR BROWN | EYES GREEN

# KARIN

---

MODELS AGENCY



**NOLWENN FAIJEAN**

HEIGHT 176CM/5'9.5" | BUST 83CM/32.5"C | WAIST 60CM/23.5" | HIPS 91 CM/36" | SIZE 36 EU/6 US/8 UK | SHOES 40 EU/9 US/6.5 UK | HAIR BROWN | EYES GREEN



# KARIN

---

MODELS AGENCY



**NOLWENN FAIJEAN**

HEIGHT 176CM/5'9.5" | BUST 83CM/32.5"C | WAIST 60CM/23.5" | HIPS 91 CM/36" | SIZE 36 EU/6 US/8 UK | SHOES 40 EU/9 US/6.5 UK | HAIR BROWN | EYES GREEN

# KARIN

MODELS AGENCY



**LE SAC LOGOMANIA**  
ROBE EN COTON ET LAINE,  
PORTÉE EN PULL MAILLE,  
399€. T-SHIRT EN COTON,  
BAGUE JASPE EN CLAIR  
D'ANGÈLE CLAUDE  
PERLOT, 215€. SAC À MAIN  
"OTY STEAMER" EN CUIR ET  
TOILE, LOUIS VUITTON,  
BOUCLES D'ORCÈLES EN  
MÉTAL D'OR, AGATHA,  
39€.



**LE SWEAT À CAPUCHE**  
AMERICAN VINTAGE, 80€.  
SOUS-PULL EN LAINA,  
LAURENCE BRAS, 299€.  
JUPÉ À PAILLETES EN  
POLYESTER, BUNDOO, 109€.  
MÈSE EN TAIWAN, THE  
ROCKIES, 299€. MÈSE  
CROCHES EN ARGENT ET  
CRISTAL, PANDORA, 199€.  
BOUCLES D'ORCÈLES EN  
LAINA ARGENT, ZADIG &  
VOLTAIRE, 299€. MONTRE  
"OYSTER PERPETUEL, 37" EN  
ACIER, ROLEX.

AGENCIÈRE STYLISTE :  
MARGOT COICE  
ASSISTANT PHOTOS :  
CANILLE CHARLOTEAU  
ASSISTANT NUMÉRIQUE :  
CLÉMENT LEMARE

**NOLWENN FAIJEAN**

HEIGHT 176CM/5'9.5" | BUST 83CM/32.5"C | WAIST 60CM/23.5" | HIPS 91 CM/36" | SIZE 36 EU/6 US/8 UK | SHOES 40 EU/9 US/6.5 UK | HAIR BROWN | EYES GREEN

# KARIN

---

MODELS AGENCY

---



**NOLWENN FAIJEAN**

HEIGHT 176CM/5'9.5" | BUST 83CM/32.5"C | WAIST 60CM/23.5" | HIPS 91 CM/36" | SIZE 36 EU/6 US/8 UK | SHOES 40 EU/9 US/6.5 UK | HAIR BROWN | EYES GREEN