

KARIN

MODELS AGENCY



JENNIFER LAMIRAOU

HEIGHT 177CM/5'9.5" | BUST 88CM/34.5"C | WAIST 61CM/24" | HIPS 88CM/34.5" | SIZE 36 EU/6 US/8 UK | SHOES 39.5 EU/8.5 US/6 UK | HAIR BROWN | EYES BROWN

KARIN

MODELS AGENCY



JENNIFER LAMIRAOU

HEIGHT 177CM/5'9.5" | BUST 88CM/34.5"C | WAIST 61CM/24" | HIPS 88CM/34.5" | SIZE 36 EU/6 US/8 UK | SHOES 39.5 EU/8.5 US/6 UK | HAIR BROWN | EYES BROWN

KARIN

MODELS AGENCY



JENNIFER LAMIRAOU

HEIGHT 177CM/5'9.5" | BUST 88CM/34.5"C | WAIST 61CM/24" | HIPS 88CM/34.5" | SIZE 36 EU/6 US/8 UK | SHOES 39.5 EU/8.5 US/6 UK | HAIR BROWN | EYES BROWN

KARIN

MODELS AGENCY



JENNIFER LAMIRAQI

HEIGHT 177CM/5'9.5" | BUST 88CM/34.5"C | WAIST 61CM/24" | HIPS 88CM/34.5" | SIZE 36 EU/6 US/8 UK | SHOES 39.5 EU/8.5 US/6 UK | HAIR BROWN | EYES BROWN

KARIN

MODELS AGENCY



JENNIFER LAMIROU

HEIGHT 177CM/5'9.5" | BUST 88CM/34.5"C | WAIST 61CM/24" | HIPS 88CM/34.5" | SIZE 36 EU/6 US/8 UK | SHOES 39.5 EU/8.5 US/6 UK | HAIR BROWN | EYES BROWN

KARIN

MODELS AGENCY



JENNIFER LAMIRAOU

HEIGHT 177CM/5'9.5" | BUST 88CM/34.5"C | WAIST 61CM/24" | HIPS 88CM/34.5" | SIZE 36 EU/6 US/8 UK | SHOES 39.5 EU/8.5 US/6 UK | HAIR BROWN | EYES BROWN

KARIN

MODELS AGENCY



JENNIFER LAMIRAOU

HEIGHT 177CM/5'9.5" | BUST 88CM/34.5"C | WAIST 61CM/24" | HIPS 88CM/34.5" | SIZE 36 EU/6 US/8 UK | SHOES 39.5 EU/8.5 US/6 UK | HAIR BROWN | EYES BROWN

KARIN

MODELS AGENCY



JENNIFER LAMIRAOU

HEIGHT 177CM/5'9.5" | BUST 88CM/34.5"C | WAIST 61CM/24" | HIPS 88CM/34.5" | SIZE 36 EU/6 US/8 UK | SHOES 39.5 EU/8.5 US/6 UK | HAIR BROWN | EYES BROWN

KARIN

MODELS AGENCY



JENNIFER LAMIRAOU

HEIGHT 177CM/5'9.5" | BUST 88CM/34.5"C | WAIST 61CM/24" | HIPS 88CM/34.5" | SIZE 36 EU/6 US/8 UK | SHOES 39.5 EU/8.5 US/6 UK | HAIR BROWN | EYES BROWN

KARIN

MODELS AGENCY



JENNIFER LAMIRAOU

HEIGHT 177CM/5'9.5" | BUST 88CM/34.5"C | WAIST 61CM/24" | HIPS 88CM/34.5" | SIZE 36 EU/6 US/8 UK | SHOES 39.5 EU/8.5 US/6 UK | HAIR BROWN | EYES BROWN

KARIN

MODELS AGENCY



WELL
SUITED

Fashion STYLE

Photography Michael Benajit

Star by Stefano Gnoia for Digital Professional
Makeup by Mike Murray
Styling by Ricki Rotman for Jax Management
Styled by Katerin Giammalin

Making a splash this summer doesn't have to mean hating it all. Let's remember Fern's Favorite, Liz Taylor, and Bo Derek—they all donned iconic maillots for the silver screen. This season Michael Kors offers his update on an American classic, accented with leather. While it may be strictly for sunbathing, it's sure to turn more than a few heads.

MICHAEL KORS polyester swimsuit with leather straps (\$290), 866-T99-KORS

April 2011 | 43

JENNIFER LAMIRAOU

HEIGHT 177CM/5'9.5" | BUST 88CM/34.5"C | WAIST 61CM/24" | HIPS 88CM/34.5" | SIZE 36 EU/6 US/8 UK | SHOES 39.5 EU/8.5 US/6 UK | HAIR BROWN | EYES BROWN

KARIN

MODELS AGENCY



JENNIFER LAMIRAOU

HEIGHT 177CM/5'9.5" | BUST 88CM/34.5"C | WAIST 61CM/24" | HIPS 88CM/34.5" | SIZE 36 EU/6 US/8 UK | SHOES 39.5 EU/8.5 US/6 UK | HAIR BROWN | EYES BROWN

KARIN

MODELS AGENCY



JENNIFER LAMIRAOU

HEIGHT 177CM/5'9.5" | BUST 88CM/34.5"C | WAIST 61CM/24" | HIPS 88CM/34.5" | SIZE 36 EU/6 US/8 UK | SHOES 39.5 EU/8.5 US/6 UK | HAIR BROWN | EYES BROWN

KARIN

MODELS AGENCY

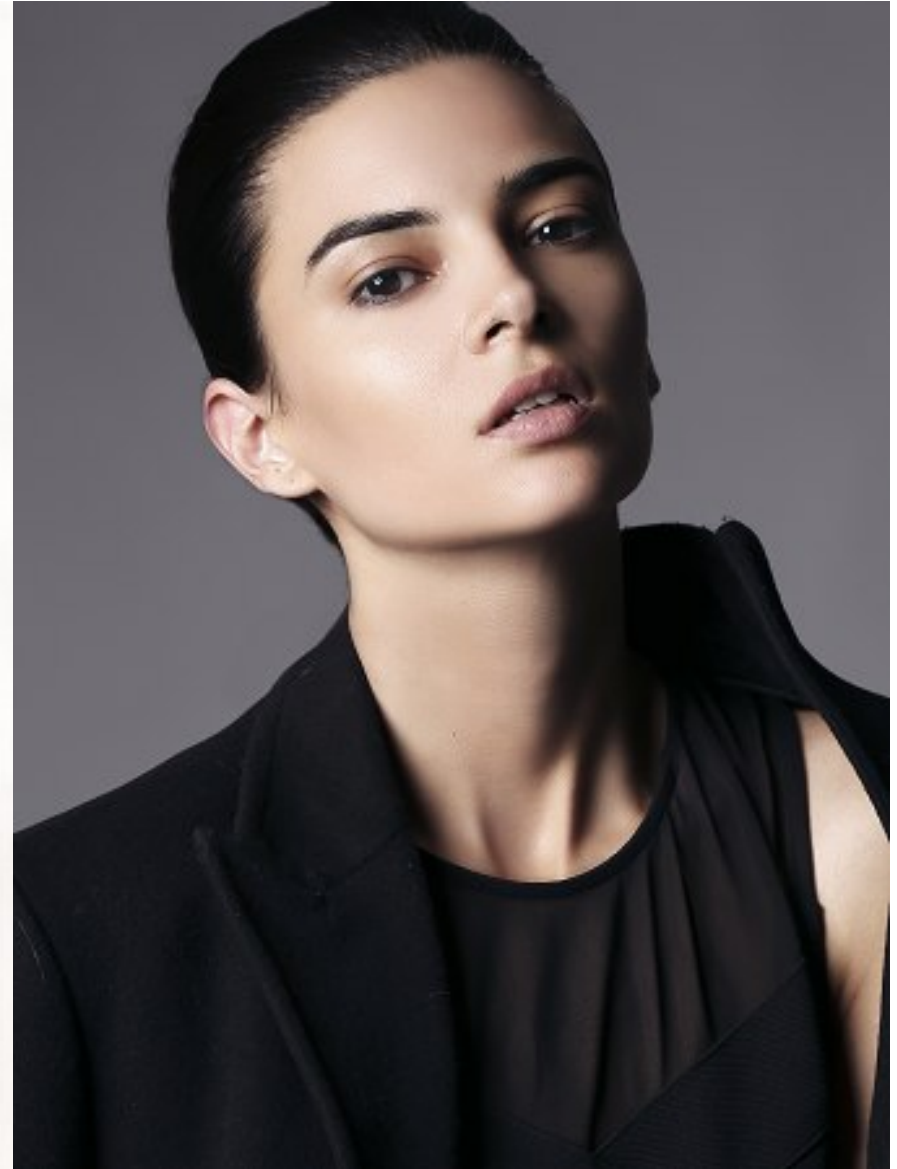


JENNIFER LAMIRAOU

HEIGHT 177CM/5'9.5" | BUST 88CM/34.5"C | WAIST 61CM/24" | HIPS 88CM/34.5" | SIZE 36 EU/6 US/8 UK | SHOES 39.5 EU/8.5 US/6 UK | HAIR BROWN | EYES BROWN

KARIN

MODELS AGENCY



JENNIFER LAMIRAOU

HEIGHT 177CM/5'9.5" | BUST 88CM/34.5"C | WAIST 61CM/24" | HIPS 88CM/34.5" | SIZE 36 EU/6 US/8 UK | SHOES 39.5 EU/8.5 US/6 UK | HAIR BROWN | EYES BROWN

KARIN

MODELS AGENCY



JENNIFER LAMIRAOU

HEIGHT 177CM/5'9.5" | BUST 88CM/34.5"C | WAIST 61CM/24" | HIPS 88CM/34.5" | SIZE 36 EU/6 US/8 UK | SHOES 39.5 EU/8.5 US/6 UK | HAIR BROWN | EYES BROWN