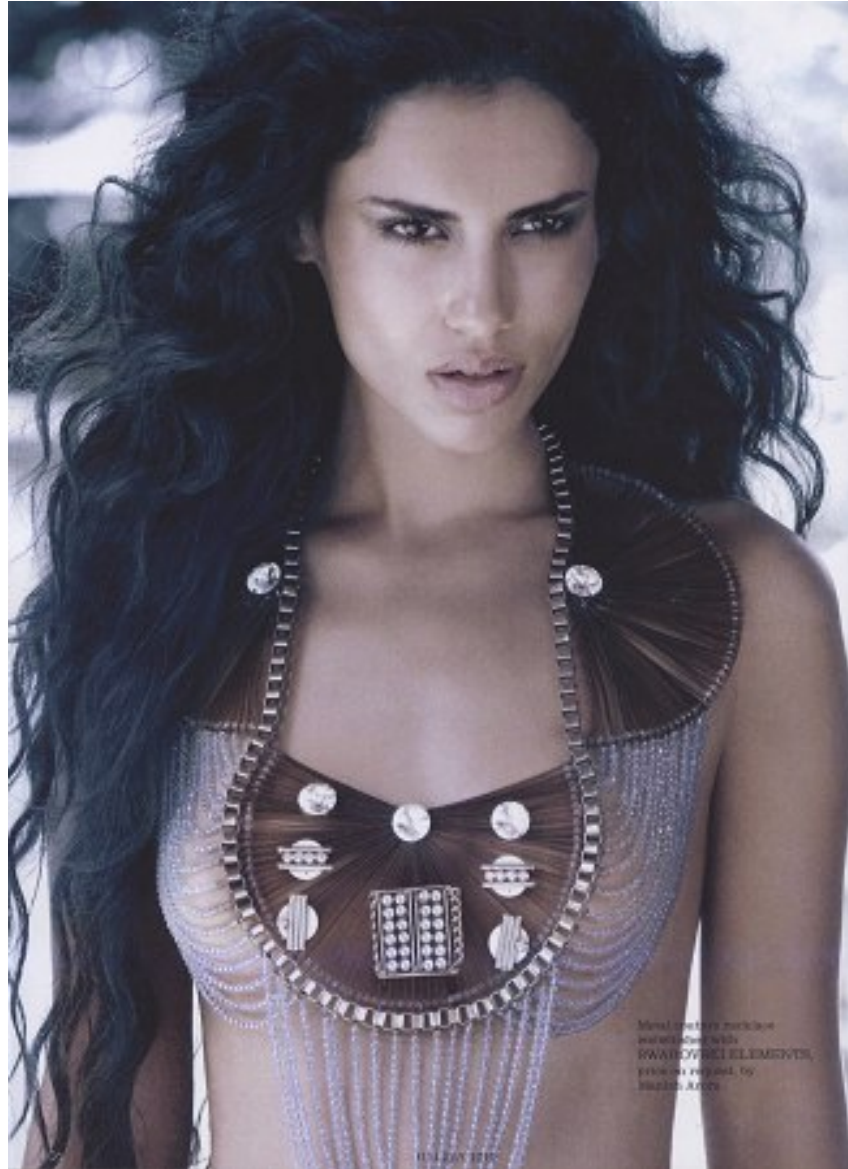


# KARIN

---

## MODELS AGENCY

---



**GIA JOHNSON**

HEIGHT 172CM/5'7.5" | BUST 81CM/32" | WAIST 61CM/24" | HIPS 86 CM/34" | SHOES 38 EU/7 US/5 UK | HAIR BROWN | EYES BROWN

# KARIN

---

## MODELS AGENCY



Mix English plaid with contrasting prints and color palette. Dress, price upon request, Alberta Ferretti. Churri pants, Rs 6,200, Anelita Manera. Belt, Rs 24,800, Boutique Veneto. Shoes, Rs 36,219 (approx), Roger Vivier. Earrings, Rs 200, Komma Kolla. Necklaces, earrings, bags, price upon request, D.M.G. Ring, Rs 2,800, Carlo Cottage. See Where to Buy for details. Model: Gia Johnson. Singh Courtesy: Anima Creative Management. Hair and Makeup: Taruza Datta. Fashion stylist: Aditi AJ Puri. Fashion assistant: Lakshmi Laha. Photo Courtesy: Anand Sh. Chakraborty. For greater bookings, contact Swati Laha at 99679 34791 or visit [www.chakraborty.com](http://www.chakraborty.com).

**GIA JOHNSON**

HEIGHT 172CM/5'7.5" | BUST 81CM/32" | WAIST 61CM/24" | HIPS 86 CM/34" | SHOES 38 EU/7 US/5 UK | HAIR BROWN | EYES BROWN

# KARIN

---

## MODELS AGENCY



GIA JOHNSON

HEIGHT 172CM/5'7.5" | BUST 81CM/32" | WAIST 61CM/24" | HIPS 86 CM/34" | SHOES 38 EU/7 US/5 UK | HAIR BROWN | EYES BROWN

# KARIN

MODELS AGENCY



GIA JOHNSON

HEIGHT 172CM/5'7.5" | BUST 81CM/32" | WAIST 61CM/24" | HIPS 86 CM/34" | SHOES 38 EU/7 US/5 UK | HAIR BROWN | EYES BROWN

# KARIN

---

## MODELS AGENCY



GIA JOHNSON

HEIGHT 172CM/5'7.5" | BUST 81CM/32" | WAIST 61CM/24" | HIPS 86 CM/34" | SHOES 38 EU/7 US/5 UK | HAIR BROWN | EYES BROWN

# KARIN

MODELS AGENCY



GIA JOHNSON

HEIGHT 172CM/5'7.5" | BUST 81CM/32" | WAIST 61CM/24" | HIPS 86 CM/34" | SHOES 38 EU/7 US/5 UK | HAIR BROWN | EYES BROWN

# KARIN

MODELS AGENCY



## GIA JOHNSON

HEIGHT 172CM/5'7.5" | BUST 81CM/32" | WAIST 61CM/24" | HIPS 86 CM/34" | SHOES 38 EU/7 US/5 UK | HAIR BROWN | EYES BROWN

# KARIN

## MODELS AGENCY



**GIA JOHNSON**

HEIGHT 172CM/5'7.5" | BUST 81CM/32" | WAIST 61CM/24" | HIPS 86 CM/34" | SHOES 38 EU/7 US/5 UK | HAIR BROWN | EYES BROWN



# KARIN

---

## MODELS AGENCY

---

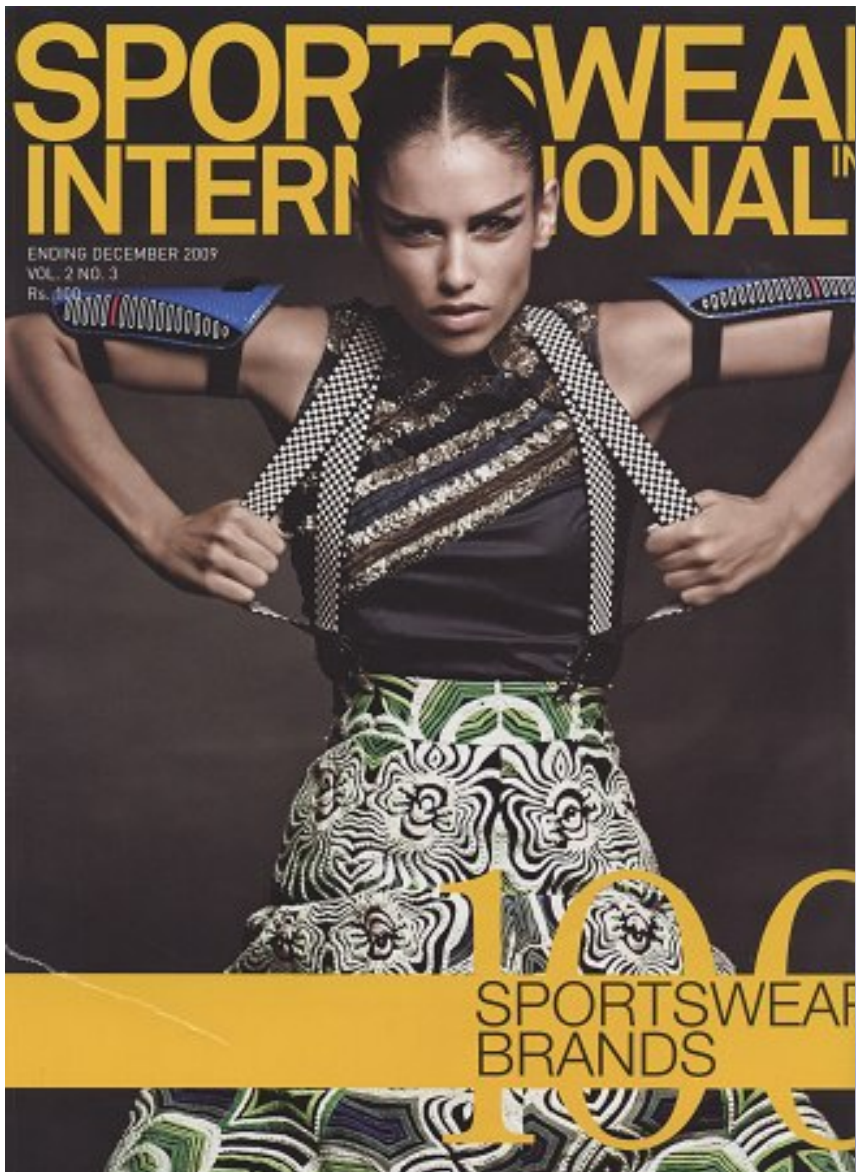


**GIA JOHNSON**

HEIGHT 172CM/5'7.5" | BUST 81CM/32" | WAIST 61CM/24" | HIPS 86 CM/34" | SHOES 38 EU/7 US/5 UK | HAIR BROWN | EYES BROWN

# KARIN

MODELS AGENCY



GIA JOHNSON

HEIGHT 172CM/5'7.5" | BUST 81CM/32" | WAIST 61CM/24" | HIPS 86 CM/34" | SHOES 38 EU/7 US/5 UK | HAIR BROWN | EYES BROWN

# KARIN

MODELS AGENCY

GRAZIA BEAUTY & HEALTH

## —A Good NIGHT Story—

*High on glamour and bursting with juicy colours, our favourite after-dark looks demand an instant make-up shake-up. And Chanel shows us just how to do it 2010 style.*

Photograph: JACIN KAMPANI  
Styling: NIDHI JAOBI  
Make-up: DOMINIQUE PARADOPoulos,  
CHANEL INTERNATIONAL MAKE-UP ARTIST

### QUIET SOPHISTICATE

Nothing spells elegant drama like a pop of this season's hottest lip shade — pink. We're talking deep, sexy pinks with a touch of shimmer. Lips get a coat of Chanel Rouge Coco 15 Taffetas Rose, topped with a layer of Gloss Plus De Chanel #07 for definition. Finish with a hint of Ombre Contour Duo Toupe-Delicate 2D on the eyes and coat nails with Le Vernis 305 Parisienne — a celeb favourite right now.

Turquoise dress, Marc diamond earrings and ring, Vidal Azis studded cushion, Armani Home

GIA JOHNSON

HEIGHT 172CM/5'7.5" | BUST 81CM/32" | WAIST 61CM/24" | HIPS 86 CM/34" | SHOES 38 EU/7 US/5 UK | HAIR BROWN | EYES BROWN

# KARIN

---

MODELS AGENCY



**GIA JOHNSON**

HEIGHT 172CM/5'7.5" | BUST 81CM/32" | WAIST 61CM/24" | HIPS 86 CM/34" | SHOES 38 EU/7 US/5 UK | HAIR BROWN | EYES BROWN

# KARIN

MODELS AGENCY



## GIA JOHNSON

HEIGHT 172CM/5'7.5" | BUST 81CM/32" | WAIST 61CM/24" | HIPS 86 CM/34" | SHOES 38 EU/7 US/5 UK | HAIR BROWN | EYES BROWN

# KARIN

---

## MODELS AGENCY

---



**GIA JOHNSON**

HEIGHT 172CM/5'7.5" | BUST 81CM/32" | WAIST 61CM/24" | HIPS 86 CM/34" | SHOES 38 EU/7 US/5 UK | HAIR BROWN | EYES BROWN