

# KARIN

---

MODELS AGENCY



SAL TAYLOR

HEIGHT 175CM/5'9" | BUST 85CM/33.5"B | WAIST 66CM/26" | HIPS 88CM/34.5" | SHOES 39 EU/8 US/6 UK | HAIR DARK BROWN | EYES BLUE/GREEN

# KARIN

---

MODELS AGENCY



SAL TAYLOR

HEIGHT 175CM/5'9" | BUST 85CM/33.5"B | WAIST 66CM/26" | HIPS 88CM/34.5" | SHOES 39 EU/8 US/6 UK | HAIR DARK BROWN | EYES BLUE/GREEN

# KARIN

MODELS AGENCY



SAL TAYLOR

HEIGHT 175CM/5'9" | BUST 85CM/33.5"B | WAIST 66CM/26" | HIPS 88CM/34.5" | SHOES 39 EU/8 US/6 UK | HAIR DARK BROWN | EYES BLUE/GREEN

# KARIN

---

## MODELS AGENCY

---



**SAL TAYLOR**

HEIGHT 175CM/5'9" | BUST 85CM/33.5"B | WAIST 66CM/26" | HIPS 88CM/34.5" | SHOES 39 EU/8 US/6 UK | HAIR DARK BROWN | EYES BLUE/GREEN

# KARIN

---

## MODELS AGENCY

---



**SAL TAYLOR**

HEIGHT 175CM/5'9" | BUST 85CM/33.5"B | WAIST 66CM/26" | HIPS 88CM/34.5" | SHOES 39 EU/8 US/6 UK | HAIR DARK BROWN | EYES BLUE/GREEN

# KARIN

---

## MODELS AGENCY

---



**SAL TAYLOR**

HEIGHT 175CM/5'9" | BUST 85CM/33.5"B | WAIST 66CM/26" | HIPS 88CM/34.5" | SHOES 39 EU/8 US/6 UK | HAIR DARK BROWN | EYES BLUE/GREEN

# KARIN

## MODELS AGENCY



Manteau en agneau  
Tina Jannon,  
1450 € | Veste en  
laine vierge (Lacard  
Danté, 125 €)  
Chapeau en feutre  
Ermanno Zegna, 245 € |  
Collier en vitreux  
plaqué et Komperiove  
de Cristoforo, 40 € |  
Sac Miu Miu Baguette  
en cuir, boucles  
et ornements Fendi,  
1100 € | Cravate en  
soie La Magagnoli,  
85 € | Colonne  
Wolfford, Escarpins  
en cuir, talons et talle  
Lorony Dato, 695 €



Pull en polyamide mélangé et sequins (H&M, 19,99 €) | Top et pantalon en coton et latex (Georges Rech, 350 €  
d'histoire) | Lunettes en métal et verres miroirs (Dior chez GrandOptical, 359 €) | Boucles d'oreilles en cuir et laiton

### SAL TAYLOR

HEIGHT 175CM/5'9" | BUST 85CM/33.5"B | WAIST 66CM/26" | HIPS 88CM/34.5" | SHOES 39 EU/8 US/6 UK | HAIR DARK BROWN | EYES BLUE/GREEN

# KARIN

## MODELS AGENCY

FASHION



Photography  
 Sebastian Winkler  
 Hair: Fred Hensley  
 Makeup: Lisa Lohr  
 Make-up: Barbara Deane  
 Grooming: Sarah  
 Hair: Matt  
 Make-up: Matt of D'Adda  
 Studio: Madsen  
 Location: London  
 in: Barcelona

Stylist  
 Anna Lee  
 Designer: Madsen  
 Boutique: Madsen.com  
 Accessories: Madsen.com  
 Jewelry: Madsen.com  
 Shoes: Madsen.com  
 Hat: Madsen.com  
 Bag: Madsen.com  
 Lingerie: Madsen.com  
 Jewelry: Madsen.com  
 Hair: Madsen.com  
 Makeup: Madsen.com  
 Location: London  
 in: Barcelona

Paul & Bear  
 Photography.com  
 Hair: Madsen.com  
 Makeup: Madsen.com  
 Location: London  
 in: Barcelona

Photography  
 Sebastian Winkler  
 Hair: Fred Hensley  
 Makeup: Lisa Lohr  
 Make-up: Barbara Deane  
 Grooming: Sarah  
 Hair: Matt  
 Make-up: Matt of D'Adda  
 Studio: Madsen  
 Location: London  
 in: Barcelona

Jacket: 172, Silver  
 size: 46/50, £119  
 New look: Stradella  
 £119, set of six  
 Henrici: color  
 pants, £124, 95  
 Madsen

22 [Fabulousmag.co.uk](http://Fabulousmag.co.uk)

FASHION



August, 2016  
 Topshop, sunglasses,  
 £75.95, 2ea

Photography  
 Toby Wilson, Seattle  
 Make-up: Barbara Deane  
 Hair: Matt  
 Make-up: Matt of D'Adda  
 Studio: Madsen  
 Location: London  
 in: Barcelona

Stylist  
 Anna Lee  
 Designer: Madsen  
 Boutique: Madsen.com  
 Accessories: Madsen.com  
 Jewelry: Madsen.com  
 Shoes: Madsen.com  
 Hat: Madsen.com  
 Bag: Madsen.com  
 Lingerie: Madsen.com  
 Jewelry: Madsen.com  
 Hair: Madsen.com  
 Makeup: Madsen.com  
 Location: London  
 in: Barcelona

30 [Fabulousmag.co.uk](http://Fabulousmag.co.uk)

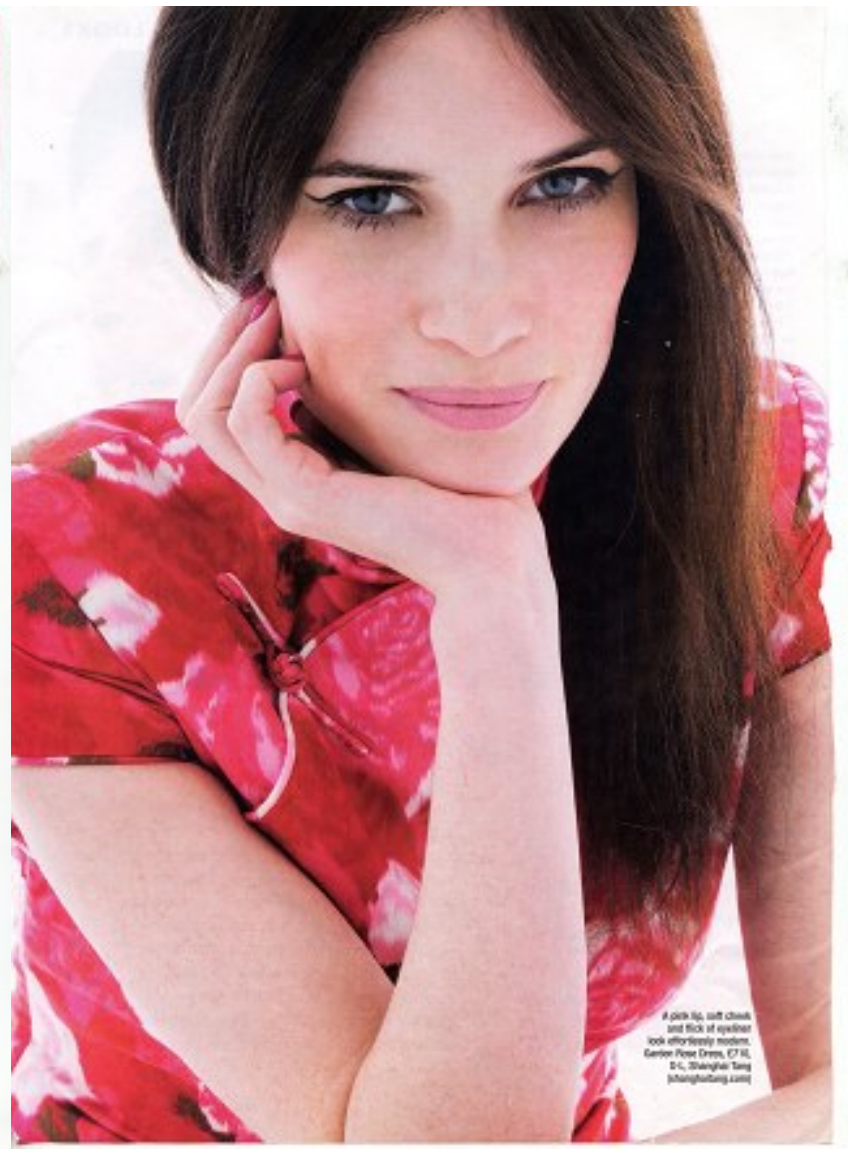
## SAL TAYLOR

HEIGHT 175CM/5'9" | BUST 85CM/33.5"B | WAIST 66CM/26" | HIPS 88CM/34.5" | SHOES 39 EU/8 US/6 UK | HAIR DARK BROWN | EYES BLUE/GREEN



# KARIN

MODELS AGENCY



SAL TAYLOR

HEIGHT 175CM/5'9" | BUST 85CM/33.5"B | WAIST 66CM/26" | HIPS 88CM/34.5" | SHOES 39 EU/8 US/6 UK | HAIR DARK BROWN | EYES BLUE/GREEN

# KARIN

---

## MODELS AGENCY



**SAL TAYLOR**

HEIGHT 175CM/5'9" | BUST 85CM/33.5"B | WAIST 66CM/26" | HIPS 88CM/34.5" | SHOES 39 EU/8 US/6 UK | HAIR DARK BROWN | EYES BLUE/GREEN

# KARIN

MODELS AGENCY



SAL TAYLOR

HEIGHT 175CM/5'9" | BUST 85CM/33.5"B | WAIST 66CM/26" | HIPS 88CM/34.5" | SHOES 39 EU/8 US/6 UK | HAIR DARK BROWN | EYES BLUE/GREEN

# KARIN

---

MODELS AGENCY



## SAL TAYLOR

HEIGHT 175CM/5'9" | BUST 85CM/33.5"B | WAIST 66CM/26" | HIPS 88CM/34.5" | SHOES 39 EU/8 US/6 UK | HAIR DARK BROWN | EYES BLUE/GREEN