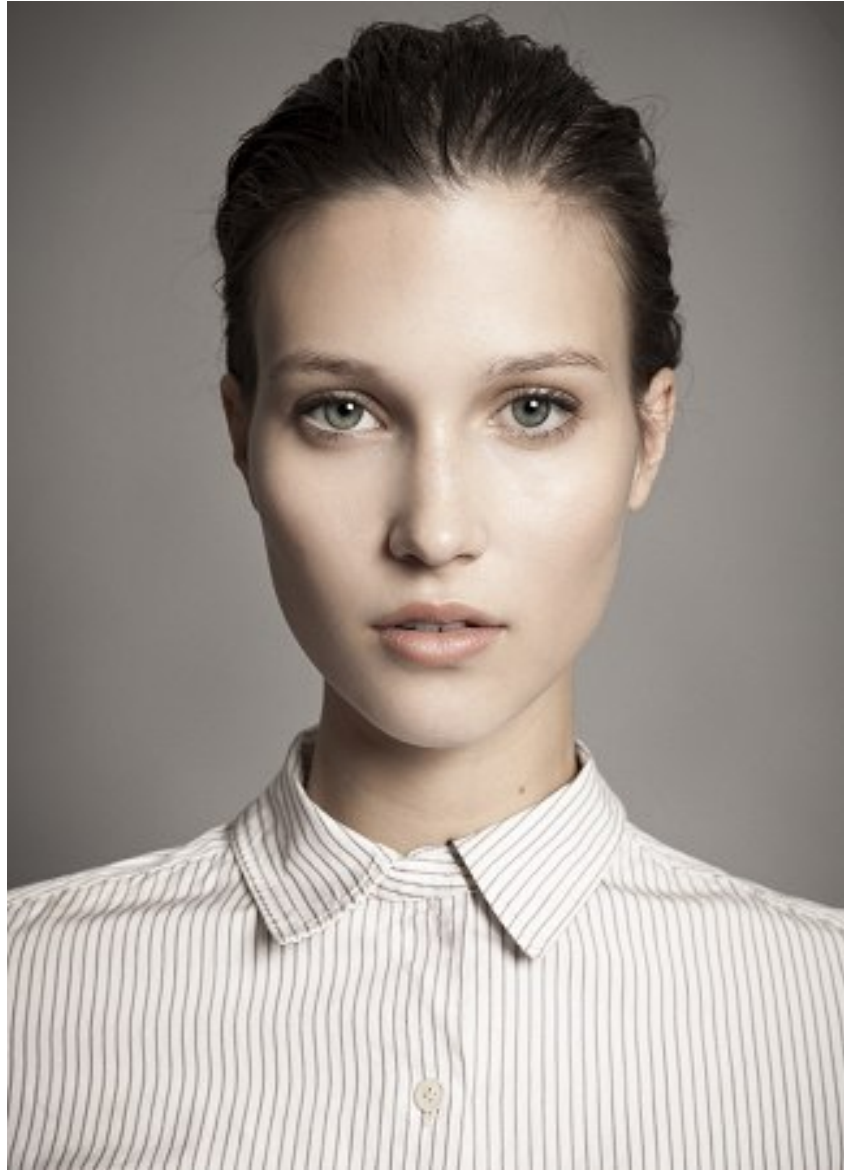


KARIN

MODELS AGENCY



TERRY

HEIGHT 175CM/5'9" | BUST 86CM/34"B | WAIST 60CM/23.5" | HIPS 92CM/36" | SHOES 39 EU/8 US/6 UK | HAIR LIGHT BROWN | EYES BLUE

KARIN

MODELS AGENCY



TERRY

HEIGHT 175CM/5'9" | BUST 86CM/34"B | WAIST 60CM/23.5" | HIPS 92CM/36" | SHOES 39 EU/8 US/6 UK | HAIR LIGHT BROWN | EYES BLUE

KARIN

MODELS AGENCY



TERRY

HEIGHT 175CM/5'9" | BUST 86CM/34"B | WAIST 60CM/23.5" | HIPS 92CM/36" | SHOES 39 EU/8 US/6 UK | HAIR LIGHT BROWN | EYES BLUE

KARIN

MODELS AGENCY



TERRY

HEIGHT 175CM/5'9" | BUST 86CM/34"B | WAIST 60CM/23.5" | HIPS 92CM/36" | SHOES 39 EU/8 US/6 UK | HAIR LIGHT BROWN | EYES BLUE

KARIN

MODELS AGENCY



TERRY

HEIGHT 175CM/5'9" | BUST 86CM/34"B | WAIST 60CM/23.5" | HIPS 92CM/36" | SHOES 39 EU/8 US/6 UK | HAIR LIGHT BROWN | EYES BLUE

KARIN

MODELS AGENCY



TERRY

HEIGHT 175CM/5'9" | BUST 86CM/34"B | WAIST 60CM/23.5" | HIPS 92CM/36" | SHOES 39 EU/8 US/6 UK | HAIR LIGHT BROWN | EYES BLUE

KARIN

MODELS AGENCY



TERRY

HEIGHT 175CM/5'9" | BUST 86CM/34"B | WAIST 60CM/23.5" | HIPS 92CM/36" | SHOES 39 EU/8 US/6 UK | HAIR LIGHT BROWN | EYES BLUE

KARIN

MODELS AGENCY



TERRY

HEIGHT 175CM/5'9" | BUST 86CM/34"B | WAIST 60CM/23.5" | HIPS 92CM/36" | SHOES 39 EU/8 US/6 UK | HAIR LIGHT BROWN | EYES BLUE

KARIN

MODELS AGENCY



TERRY

HEIGHT 175CM/5'9" | BUST 86CM/34"B | WAIST 60CM/23.5" | HIPS 92CM/36" | SHOES 39 EU/8 US/6 UK | HAIR LIGHT BROWN | EYES BLUE

KARIN

MODELS AGENCY

LIP SHEER, CORALLINE, CHANTICALLE.
 PURE COLOR, VANILLA TRUFFLE, ESTÉE LAUDER.
 ROUGE À LÈVRES RUBY MOO, M.A.C.

ROUGE PUR COUTURE, FLÛCHER INNOCENT, YSL.
 PHYTO-LIP SHINE, SHEER ROSE, SISLEY.
 ROUGE TERRIBLY, PINK PARTY, BY TERRY.

ROUGE INTERDIT, CANDIDE TANGERINE, GIVENCHY.
 PURE COLOR, MILON, ESTÉE LAUDER.
 ROUGE À LÈVRES UP THE AMP, M.A.C.

FLAMBOYANT
 MISE EN BEAUTÉ
 JULIE B POUR DIOR
 AVEC : DIORSKIN NUDE,
 FOND DE TEINT FLUIDE
 EFFET PEAU NUE :
 DIORSKIN NUDE GLOW
 EFFET PEAU NUE, CRAYON
 KHÔLE MARRON, PALETTE
 5 COULEURS, AMBIK
 DESIGN, MASCARA
 DIORSHOW ICONIC NOIR,
 DIOR ADDICT LIPSTICK,
 PARIS N° 762, DIOR ADDICT
 LIP MAXimizer.

**CHACUNE CHERCHE
 SON ROUGE**

SE DESSINER UNE BOUCHE *INCENDIAIRE* FAIT PARTIE DES
 PRESCRIPTIONS DE SAISON, ET LE LIPSTICK S'IMPOSE COMME LE
 "IT" ACCESSOIRE DU MOMENT, DANS LE TRIO DE TÊTE, DU ROSE
 POP, DU CORAIL GOURMAND ET *TOUJOURS DU ROUGE*
 COQUELICOT. MAT, SATINÉ OU BRILLANT, ON VARIE LES EFFETS...

PHOTO: FREDERIC KAME, COIFFURE: CAROLINE BÉGIN/STEPHANE, CHRISTIAN DIOR

TERRY

HEIGHT 175CM/5'9" | BUST 86CM/34"B | WAIST 60CM/23.5" | HIPS 92CM/36" | SHOES 39 EU/8 US/6 UK | HAIR LIGHT BROWN | EYES BLUE

KARIN

MODELS AGENCY



TERRY

HEIGHT 175CM/5'9" | BUST 86CM/34"B | WAIST 60CM/23.5" | HIPS 92CM/36" | SHOES 39 EU/8 US/6 UK | HAIR LIGHT BROWN | EYES BLUE

KARIN

MODELS AGENCY



TERRY

HEIGHT 175CM/5'9" | BUST 86CM/34"B | WAIST 60CM/23.5" | HIPS 92CM/36" | SHOES 39 EU/8 US/6 UK | HAIR LIGHT BROWN | EYES BLUE

KARIN

MODELS AGENCY



TERRY

HEIGHT 175CM/5'9" | BUST 86CM/34"B | WAIST 60CM/23.5" | HIPS 92CM/36" | SHOES 39 EU/8 US/6 UK | HAIR LIGHT BROWN | EYES BLUE