

# KARIN

---

MODELS AGENCY

---



**TASHA MOORE**

HEIGHT 180CM/5'11" | BUST 81CM/32"A | WAIST 60CM/23.5" | HIPS 86 CM/34" | SHOES 40 EU/9 US/6.5 UK | HAIR BLACK | EYES BROWN

# KARIN

MODELS AGENCY



TASHA MOORE

HEIGHT 180CM/5'11" | BUST 81CM/32"A | WAIST 60CM/23.5" | HIPS 86 CM/34" | SHOES 40 EU/9 US/6.5 UK | HAIR BLACK | EYES BROWN

# KARIN

MODELS AGENCY



Doudoune (Liu Jo),  
sweat-shirt (Napapijri),  
pantalons (Suncoo),  
Cassette (Surberry),  
collier (Reine Resalle),  
sac banane (Lancaster),  
ceinture (K-Way),  
bracelet (Flower for Zaki),  
bague (Versace).

Parka en gabardine  
de coton (Fendi), pull en laine  
et coton (Boden), combinaison  
(Hotel Particulier), Casque  
(Monster), écharpe  
(Sportmax), montre (Nixon),  
bottines (Mango), ghetto blaster  
(Alejandro Anzeville).



## TASHA MOORE

HEIGHT 180CM/5'11" | BUST 81CM/32"A | WAIST 60CM/23.5" | HIPS 86 CM/34" | SHOES 40 EU/9 US/6.5 UK | HAIR BLACK | EYES BROWN



# KARIN

MODELS AGENCY



TASHA MOORE

HEIGHT 180CM/5'11" | BUST 81CM/32"A | WAIST 60CM/23.5" | HIPS 86 CM/34" | SHOES 40 EU/9 US/6.5 UK | HAIR BLACK | EYES BROWN

# KARIN

MODELS AGENCY



*Marie and Tasha*  
*in*  
**DOUBLE DOUBLE TOIL AND TROUBLE**

*photography Boris El'fin*  
*styling Sarah Jane Frances Peratt*



*Hair & makeup ANNA CAIAZZO, Hair agency MONSTER MANAGEMENT and/or*  
*Tailor agency D.E. STOKES and/or*

## TASHA MOORE

HEIGHT 180CM/5'11" | BUST 81CM/32"A | WAIST 60CM/23.5" | HIPS 86 CM/34" | SHOES 40 EU/9 US/6.5 UK | HAIR BLACK | EYES BROWN

# KARIN

---

MODELS AGENCY

---



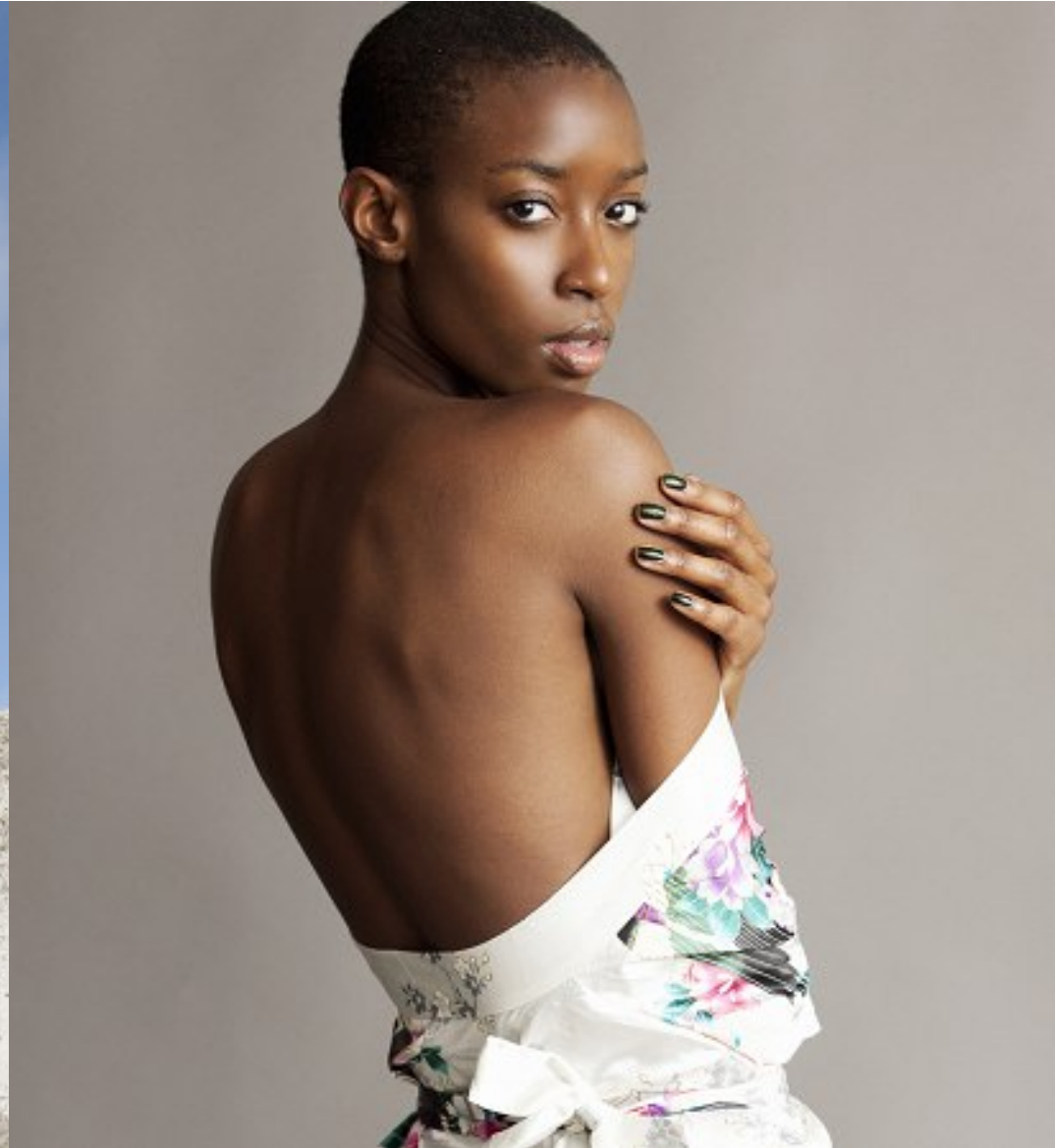
**TASHA MOORE**

HEIGHT 180CM/5'11" | BUST 81CM/32"A | WAIST 60CM/23.5" | HIPS 86 CM/34" | SHOES 40 EU/9 US/6.5 UK | HAIR BLACK | EYES BROWN

# KARIN

---

MODELS AGENCY



TASHA MOORE

HEIGHT 180CM/5'11" | BUST 81CM/32"A | WAIST 60CM/23.5" | HIPS 86 CM/34" | SHOES 40 EU/9 US/6.5 UK | HAIR BLACK | EYES BROWN



# KARIN

---

MODELS AGENCY



TASHA MOORE

HEIGHT 180CM/5'11" | BUST 81CM/32"A | WAIST 60CM/23.5" | HIPS 86 CM/34" | SHOES 40 EU/9 US/6.5 UK | HAIR BLACK | EYES BROWN



# KARIN

---

MODELS AGENCY

---



**TASHA MOORE**

HEIGHT 180CM/5'11" | BUST 81CM/32"A | WAIST 60CM/23.5" | HIPS 86 CM/34" | SHOES 40 EU/9 US/6.5 UK | HAIR BLACK | EYES BROWN

# KARIN

---

MODELS AGENCY



TASHA MOORE

HEIGHT 180CM/5'11" | BUST 81CM/32"A | WAIST 60CM/23.5" | HIPS 86 CM/34" | SHOES 40 EU/9 US/6.5 UK | HAIR BLACK | EYES BROWN

# KARIN

MODELS AGENCY



## TASHA MOORE

HEIGHT 180CM/5'11" | BUST 81CM/32"A | WAIST 60CM/23.5" | HIPS 86 CM/34" | SHOES 40 EU/9 US/6.5 UK | HAIR BLACK | EYES BROWN



# KARIN

---

MODELS AGENCY



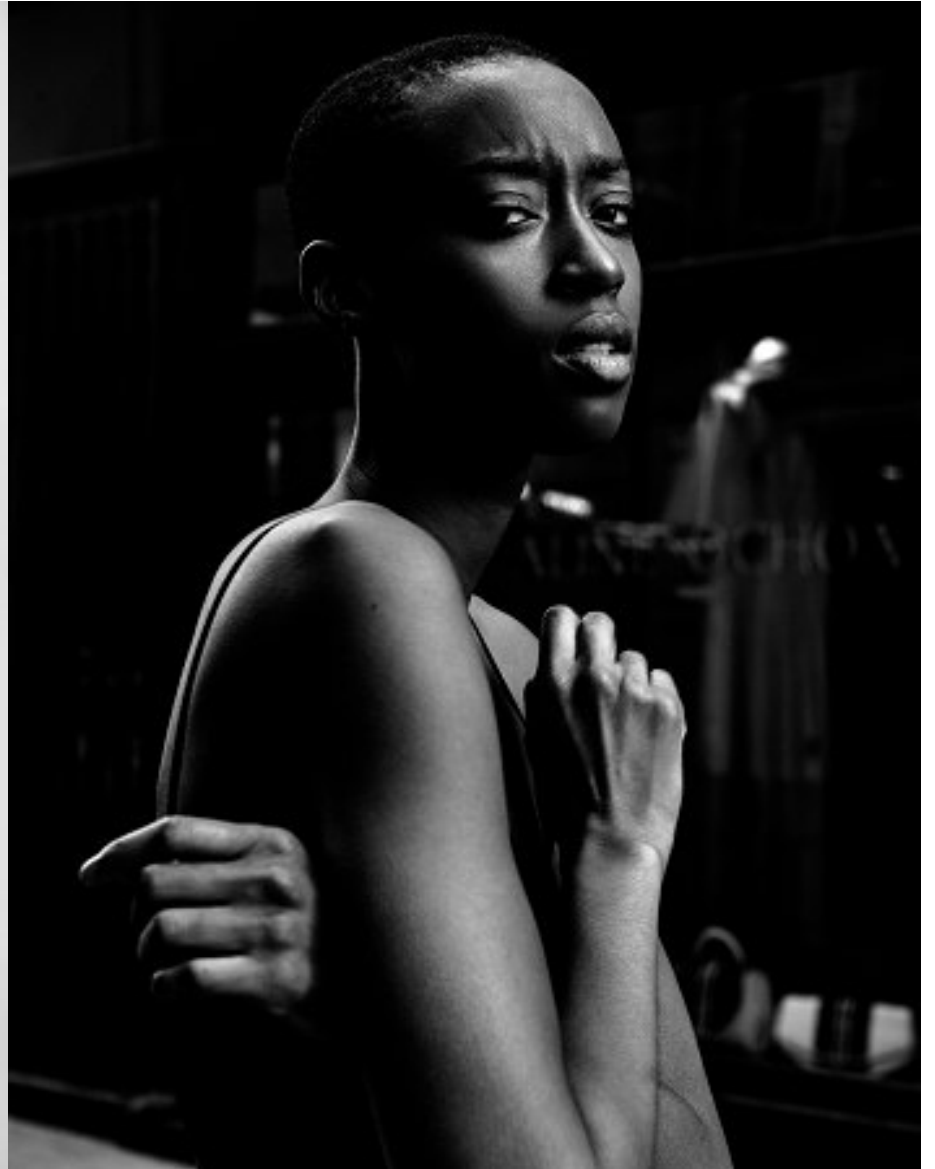
TASHA MOORE

HEIGHT 180CM/5'11" | BUST 81CM/32"A | WAIST 60CM/23.5" | HIPS 86 CM/34" | SHOES 40 EU/9 US/6.5 UK | HAIR BLACK | EYES BROWN

# KARIN

---

MODELS AGENCY



TASHA MOORE

HEIGHT 180CM/5'11" | BUST 81CM/32"A | WAIST 60CM/23.5" | HIPS 86 CM/34" | SHOES 40 EU/9 US/6.5 UK | HAIR BLACK | EYES BROWN