

# KARIN

---

MODELS AGENCY



**LEA GARGIULO**

HEIGHT 173CM/5'8" | BUST 85CM/33.5"C | WAIST 60CM/23.5" | HIPS 88CM/34.5" | SHOES 38 EU/7 US/5 UK | HAIR BROWN | EYES BLUE

# KARIN

---

## MODELS AGENCY

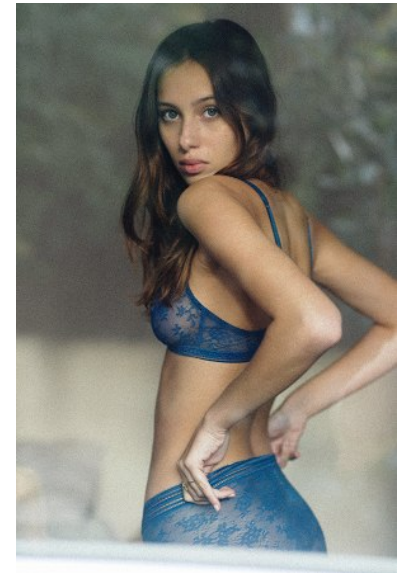
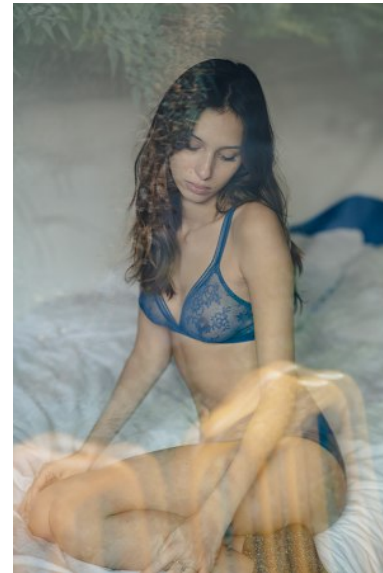
---



DRESS: AF  
EARRINGS: HOMAGE



ABOVE:  
BLUSSE: AF  
SHORT: WHITE STORY  
EARRINGS: HOMAGE



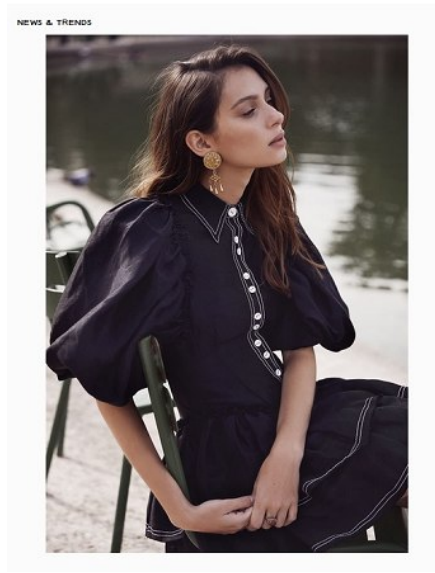
## LEA GARGIULO

HEIGHT 173CM/5'8" | BUST 85CM/33.5"C | WAIST 60CM/23.5" | HIPS 88CM/34.5" | SHOES 38 EU/7 US/5 UK | HAIR BROWN | EYES BLUE



# KARIN

MODELS AGENCY



LEA  
PHOTOGRAPH BY ANA SUNTAYTAREDO  
STYLED JANE RIDGE  
HAIR & MAKE UP JOHNNIE BICHALLOU  
MODEL: LEA GARGIULO @ KARIN MODELS



LEA  
PHOTOGRAPH BY ANA SUNTAYTAREDO  
STYLED JANE RIDGE  
HAIR & MAKE UP JOHNNIE BICHALLOU  
MODEL: LEA GARGIULO @ KARIN MODELS



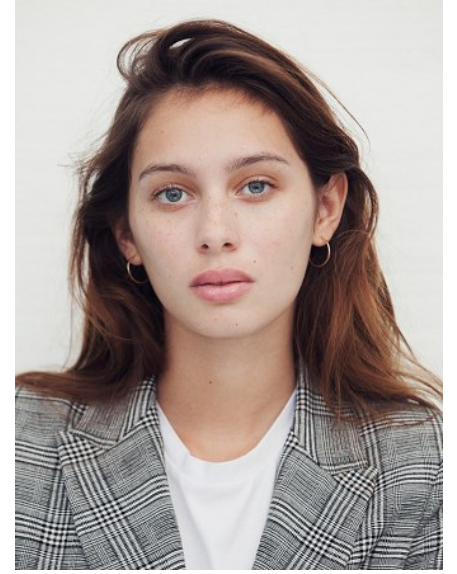
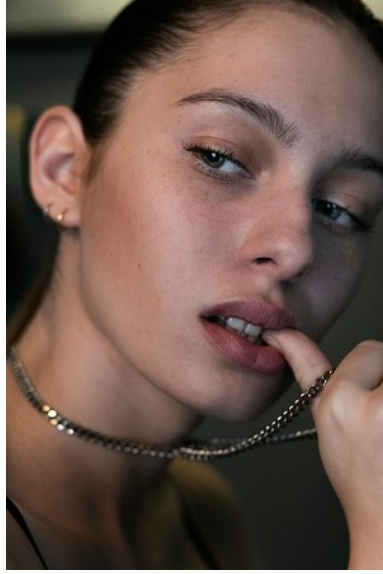
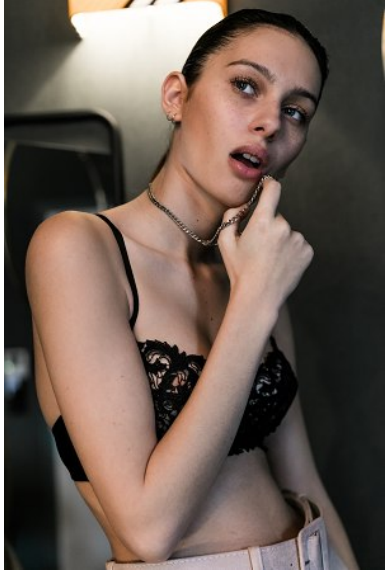
## LEA GARGIULO

HEIGHT 173CM/5'8" | BUST 85CM/33.5"C | WAIST 60CM/23.5" | HIPS 88CM/34.5" | SHOES 38 EU/7 US/5 UK | HAIR BROWN | EYES BLUE

# KARIN

---

## MODELS AGENCY



LEA GARGIULO

HEIGHT 173CM/5'8" | BUST 85CM/33.5"C | WAIST 60CM/23.5" | HIPS 88CM/34.5" | SHOES 38 EU/7 US/5 UK | HAIR BROWN | EYES BLUE



# KARIN

---

MODELS AGENCY

---



## LEA GARGIULO

HEIGHT 173CM/5'8" | BUST 85CM/33.5"C | WAIST 60CM/23.5" | HIPS 88CM/34.5" | SHOES 38 EU/7 US/5 UK | HAIR BROWN | EYES BLUE