

KARIN

MODELS AGENCY



TASHA MOORE

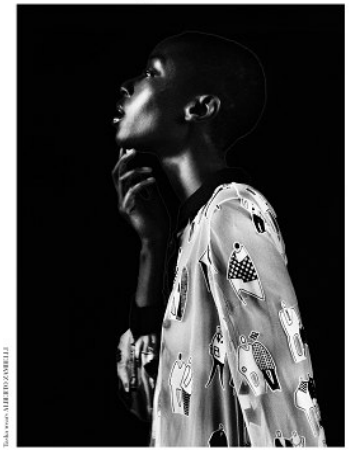
HEIGHT 180CM/5'11" | BUST 81CM/32"A | WAIST 60CM/23.5" | HIPS 86 CM/34" | SHOES 40 EU/9 US/6.5 UK | HAIR BLACK | EYES BROWN

KARIN

MODELS AGENCY



Marie and Tasha in DOUBLE DOUBLE TOLL AND TROUBLE
photography: Boris El'kin
styling: Sarah Jane Preece Preece

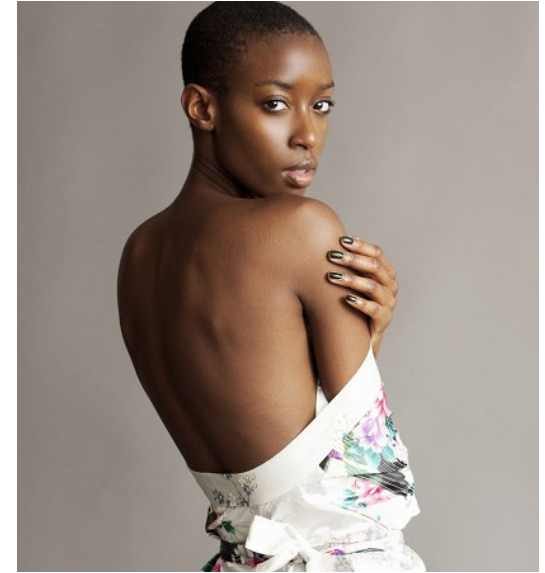
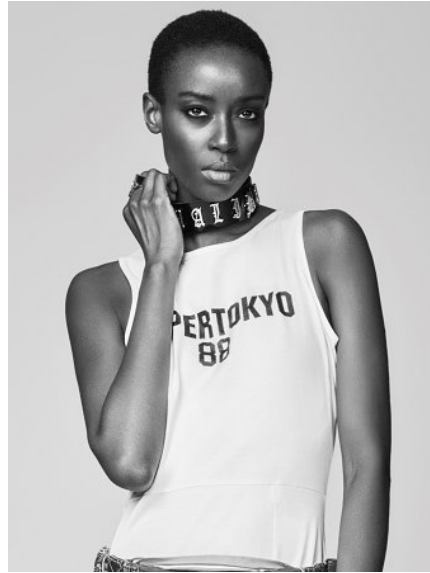


TASHA MOORE

HEIGHT 180CM/5'11" | BUST 81CM/32"A | WAIST 60CM/23.5" | HIPS 86 CM/34" | SHOES 40 EU/9 US/6.5 UK | HAIR BLACK | EYES BROWN

KARIN

MODELS AGENCY

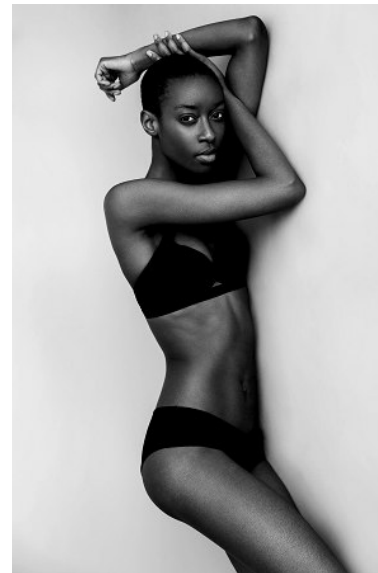
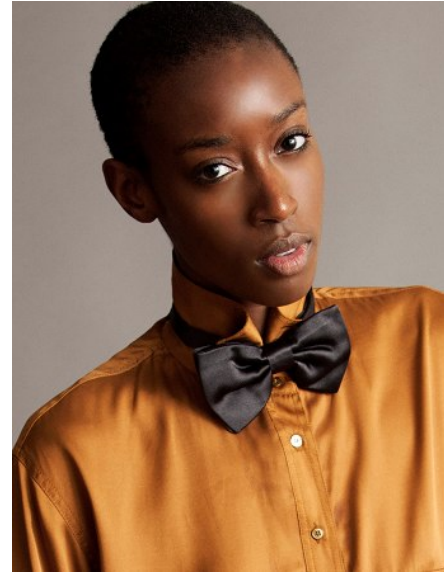


TASHA MOORE

HEIGHT 180CM/5'11" | BUST 81CM/32"A | WAIST 60CM/23.5" | HIPS 86 CM/34" | SHOES 40 EU/9 US/6.5 UK | HAIR BLACK | EYES BROWN

KARIN

MODELS AGENCY



TASHA MOORE

HEIGHT 180CM/5'11" | BUST 81CM/32"A | WAIST 60CM/23.5" | HIPS 86 CM/34" | SHOES 40 EU/9 US/6.5 UK | HAIR BLACK | EYES BROWN